



City of Rigby  
City Hall Council Chambers

Planning and Zoning Agenda  
February 7, 2013  
7:00 p.m.

P & Z Action

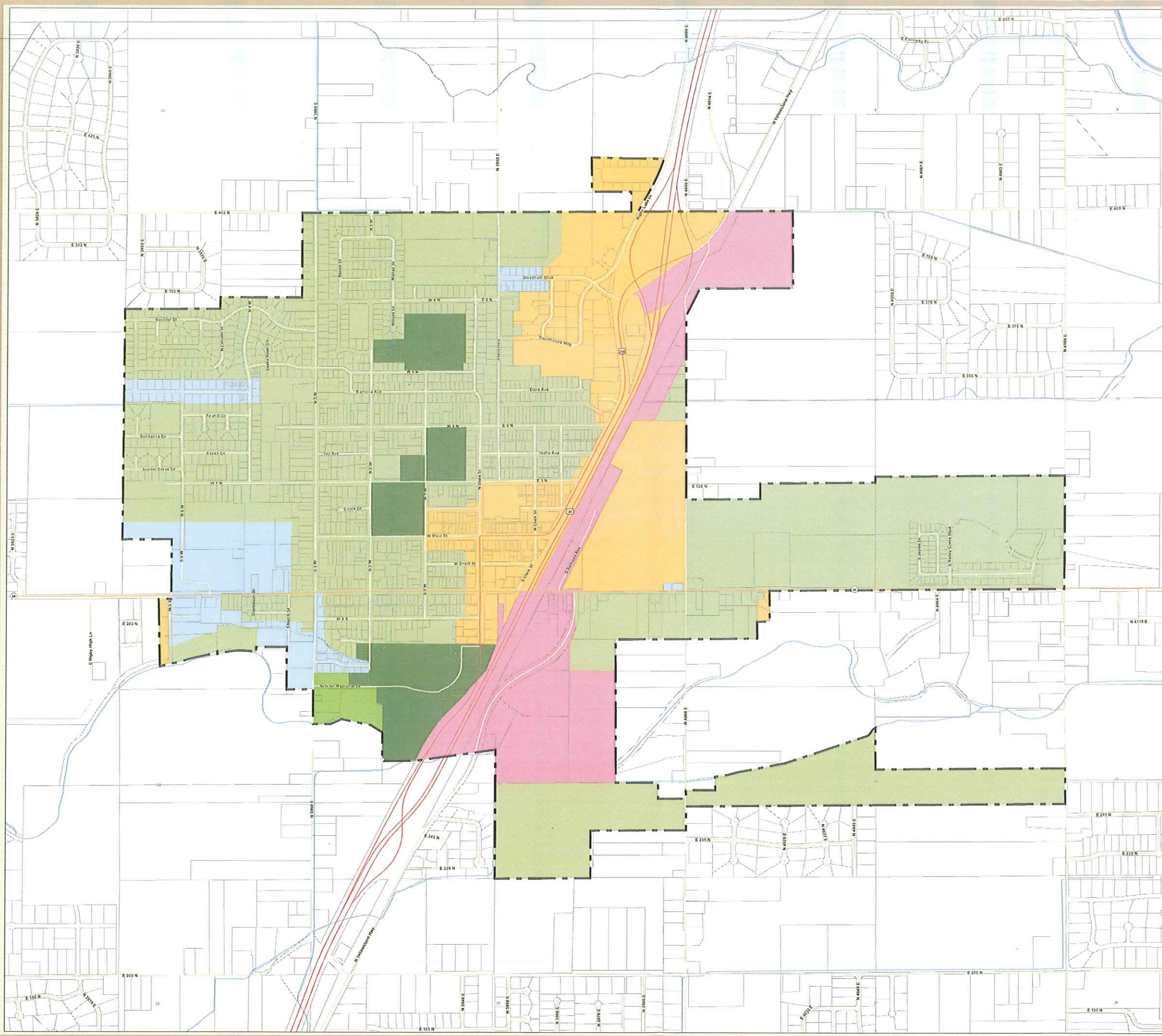
1. Roll call
2. Old Business:
  - a. Bylaws Recommendation
3. New Business:
  - a.
4. Work Session
  - a. Proposed R-2 Zoning Ordinance Work Session
5. Approval of Minutes- January 10, 2013 Decision
6. Administrator's Report
7. Adjourn

# The City of Rigby ZONE MAP



**DRAFT**

- Rigby City Limits
- Property Lines
- Commercial
- Industrial
- Mobile Home
- Multi Family
- Residential
- Schools And Parks
- INTERSTATE
- STATE HIGHWAY
- U.S. HIGHWAY
- LOCAL ROAD



I hereby certify that this is the Official Zone Map of Rigby, Idaho, which was adopted by the City Council on this \_\_\_\_\_ day of \_\_\_\_\_, 2013 by Ordinance number \_\_\_\_\_.

City Clerk, Dave Swigger

Mayor, Keith Smith



Printed: January 2013

This illustration is a representation of recorded documents of Jefferson County, Idaho. The county is not responsible for any inaccuracies contained here in.